



# FAMU – FSU College of Engineering Civil and Environmental Engineering

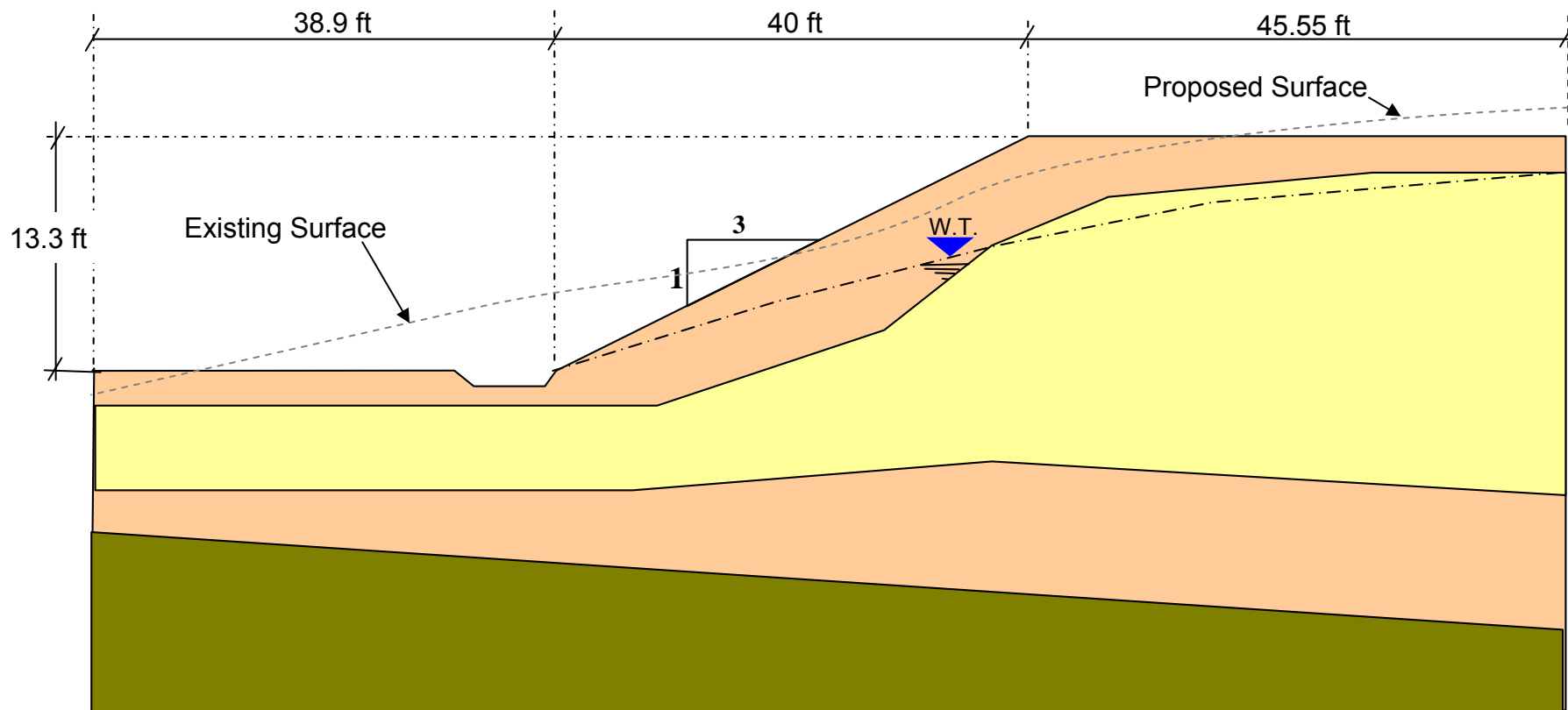
## GEOTECHNICAL DESIGN PROJECT

Fall 2009

Project # 2

Slope Stability Analysis and Design

Horizontal Scale  $\neq$  Vertical Scale



- Silty Sand  $\gamma = 110 \text{ pcf}$ ,  $\phi = 30^\circ$ ,  $c = 100 \text{ psf}$
- Sandy Clay,  $\gamma = 118 \text{ pcf}$ ,  $\phi = 26^\circ$ ,  $c = 200 \text{ psf}$
- Limestone,  $\gamma = 119 \text{ pcf}$ ,  $\phi = 33^\circ$ ,  $c = 800 \text{ psf}$

By: Kamal Tawfiq, Ph.D., P.E.